

AERODROME CHART

AD ELEV 685 FT

STOCKERAU  
STOCKERAU  
AUSTRIA

STOCKERAU RADIO

122,855 [ge, en]

Phone +43 (0) 22 66 62 475

14 NM NW WIEN



© Rogers Data    www.rogersdata.at						Microsoft product screen shot reprinted with permission from Microsoft Corporation		
RWY	MTOM	TORA	ASDA	TODA	LDA	LIGHTING	THR ELEV	THR PSN
07	40t	800	-	-	800	-	-	-
25	40t	800	-	-	620	-	-	-
AD located within TMA Wien and MTMA Tulln close to the transit routes. Cross road in front of THR 25 at MNN 130 FT GND. Overflying of built-up areas shall be avoided within arrival and departure area. Caution: Wind turbines and high-tensions lines near AD. Pay attention to glider activity. MCTR LOXT S of AD. Model airfield within aerodrome traffic circuit. Flight procedures: PPR departure route via X.							PPR  Aerodrome admissible for: engine-driven aircraft, glider, helicopter  Landings and departures of commercial flights with a MTOW of 10 tons and more are permitted only with approval by the aerodrome operator.	

21 MAR 2024

N 48 24 32  
E 016 11 25

LOAU

Changes: editorial

CHART FOR VFR FLIGHTS

AD ELEV 685 FT

STOCKERAU

STOCKERAU RADIO

STOCKERAU

122,855 [ge,en]

AUSTRIA

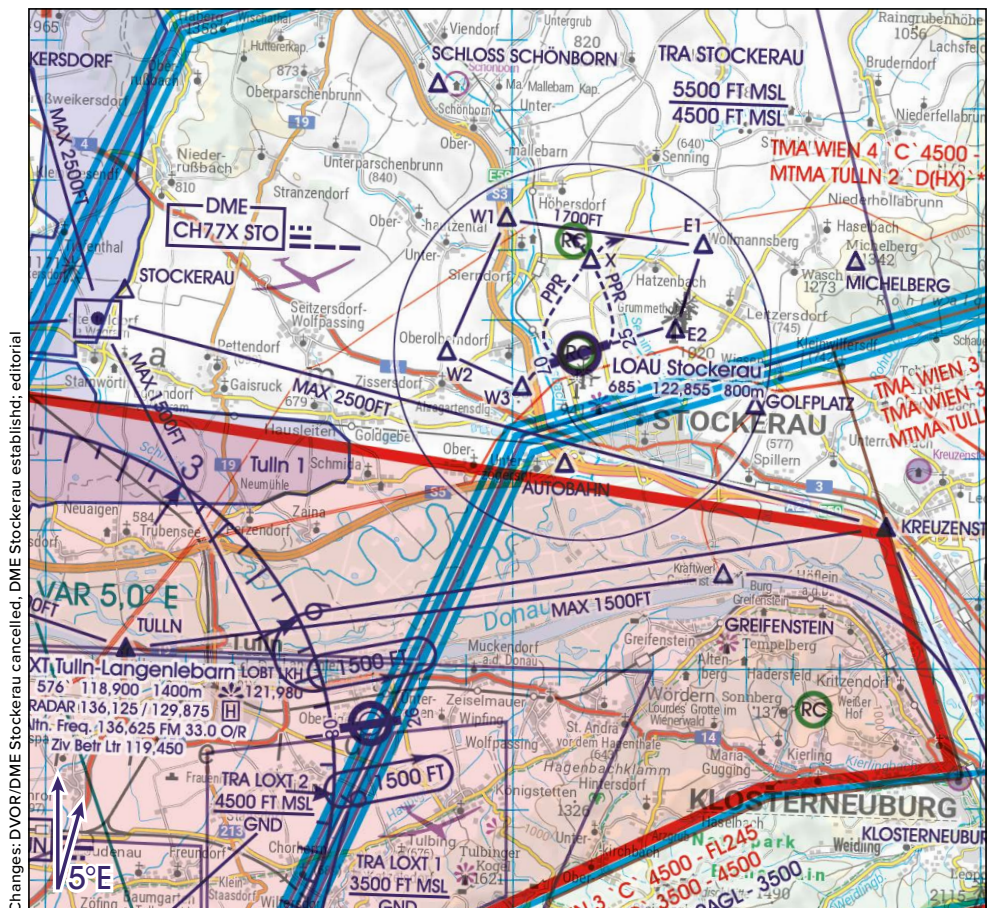
Phone +43 (0) 2266 62475

14 NM NW WIEN

16° E

16° 10' E

16° 20' E



122,855 STOCKERAU RADIO

118,900 / 136,625 TULLN TOWER

136,125 / 129,875 TULLN RADAR

119,450 TULLN Ziv. Betr. Ltr.

An «Automatic Report and Information Service» (ARISA) may be in operation on frequency 130,855 MHz, providing a continuous broadcast of weather and operational data. The broadcasts are not validated and not-binding. The use is at own discretion and is no substitute for communicating on the aerodrome frequency 122,855 MHz.

26 DEC 2024

STOCKERAU | LOAU